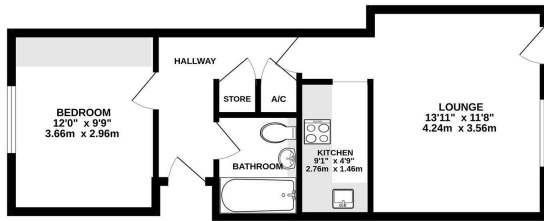




**Keith
Ashton**

Hutton Road, Shenfield
Brentwood

GROUND FLOOR
448 sq.ft. (41.6 sq.m.) approx.



TOTAL FLOOR AREA - 448 sq ft. (41.6 sq.m.) approx.
Measurements are approximate. Not to scale. Illustrative purposes only.
(Based on Measure IQ202)



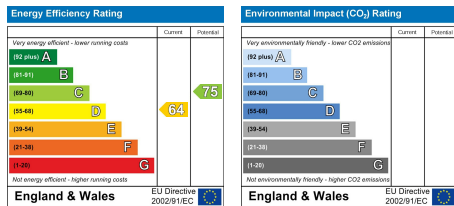
5 Hutton Road, Shenfield, Brentwood, CM15 8LA

Guide Price £250,000 - £260,000 We are delighted to bring to market this superbly located and immaculately presented ground floor apartment, perfectly positioned for modern living.

Step inside to a stylishly designed interior featuring a welcoming entrance hallway with elegant herringbone flooring flowing seamlessly throughout. The spacious lounge opens directly onto a patio area, ideal for relaxing outdoors. A well-appointed kitchen, sleek contemporary bathroom, and generously sized double bedroom with built-in storage complete the home's impressive layout.

Externally, the property benefits from an allocated parking space and enjoys an enviable location less than half a mile from Shenfield Mainline Station, providing swift and convenient links into London and beyond. With the High Street just moments away, offering a good range of shops, bars, and restaurants, this apartment is a perfect choice for first-time buyers, commuters, or investors seeking a ready-to-move-in opportunity.

Guide Price £250,000 - £260,000



SERVICES:

Local Authority: Brentwood
Council tax band: C
Post code: CM15 8LA

VIEWING:

Strictly by prior arrangement with Keith Ashton Estate Agents

OPENING HOURS:

Monday to Friday: 8.45AM - 6.30PM | Saturdays: 9AM - 5.30PM | Sundays: 10AM - 2PM

MORTGAGE INFORMATION:

We offer the additional facility of an in-house Independent Financial Adviser who will access all mortgage lenders with the purpose of providing you with the benefit of choice. For quotations or comparables please call 01277 260858 or visit our interactive website at www.mortgagebusiness.net



We the Agent have not tested any apparatus, fittings or services for this property. The plot size is intended merely as a guide and has not been officially measured or verified by the Agent. Photographs are for illustration only and may depict items which are not for sale or included in the sale of the property. As part of the service we offer we may recommend ancillary services to you which we believe may help you with your property transaction. We wish to make you aware, that should you decide to use these services we will receive a referral fee. For full and detailed information please visit 'terms and conditions' on our website www.keithashton.co.uk

Brentwood
Tel. 01277 260858

Village Office
Tel. 01277 375757

Lettings Office
Tel. 01277 202200

Explore more @ www.keithashton.co.uk

